

SUMMARY

TOTAL SITE AREA=39332M²

SITE AREA FOR PROPOSED FACILITY=28806M²

SITE AREA FOR FUTURE USE= 10526M²

PROPOSED BUILDING:

COLD STORAGE =6000.25M²

WAREHOUSE FACILITIES=5928.0M²

FRONT ADMINISTRATION= 714.20M²

REAR DOCK OFFICES & AMENITIES= 448.70M²

PLANTROOMS= 341.41M²

GROSS FLOOR AREA= 13432M²

PARKING:

DCP WAREHOUSE 1 SPACE PER 300M² GFA = 45

PROVISIONS: 84 CARS +2 DISABLED TOTAL = 86

NOTE:
1. LANDSCAPE DESIGN REFER TO SCAPE DESIGN
2. FRL- FINISHED LEVELS

1 MASTER PLAN
DA02 SCALE : 1:400 @ A1

©This drawing and all information contained in it is the property of Planes Group Pty Ltd, and this drawing must be returned to us on demand. This drawing is issued on the condition that, except with our written consent, it must not be reproduced or communicated to any party and it must not be used for any other project or purpose than it is intended.



PLANES GROUP Pty. Ltd.
DESIGN & DOCUMENTATION
ACN: 076 055 680 ABN: 32 076 055 680
297 EASTERN VALLEY WAY, MIDDLE COVE, NSW 2068
PHONE: (02) 9417-2835; FAX: (02) 9417-540
e-mail: jess.bon@planesgroup.com.au

Drawn
BAPG

Checked
JB

Date
10.05.17

Scale
1:400@A1

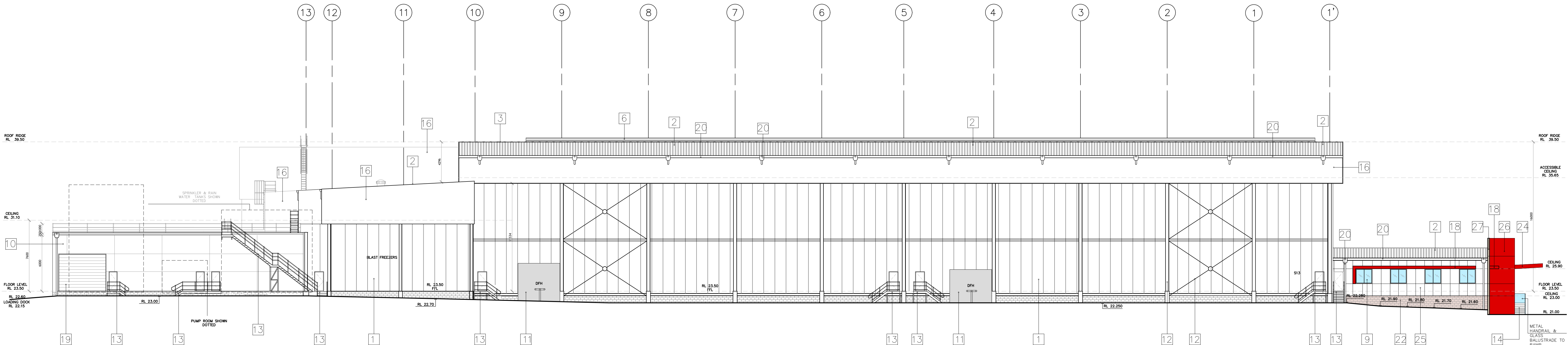
Drawing title
MASTER PLAN

Project address/Owner
Lederer Group
37-39 WENTWORTH ST, GREENACRE NSW 2190

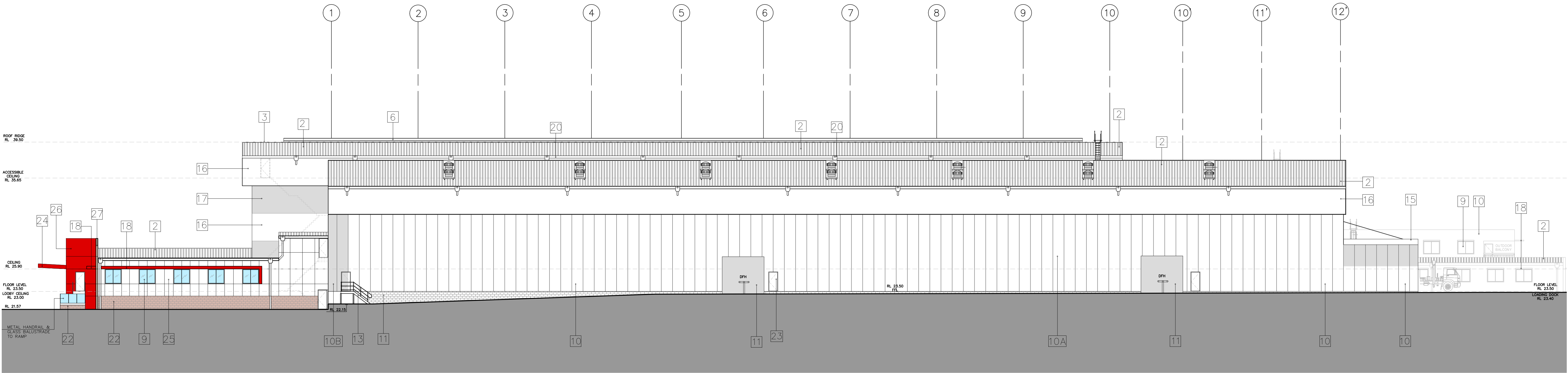
Project/title
LEDERER GROUP COLD STORAGE &
WAREHOUSE FACILITY

H	10.05.17	DESIGN DEVELOPMENT
Drawing no. DA02	Revision no. H	





1
DA06
SOUTH ELEVATION
SCALE 1:200 @A1



2
DA06
NORTH ELEVATION
SCALE 1:200 @A1

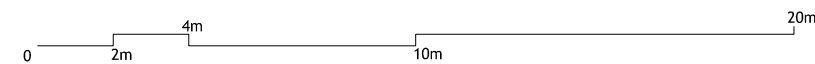
FINISHES SCHEDULE

- COLORBOND "PIR" INSULATED WALL PANELS-SURFMIST COLOUR
- ZINCALUME-LYSAGHT TRIMDEK 0.48 BMT DECK ROOF
- COLORBOND FASCIA CAPPING-COLOUR TBA
- GALVANIZED STEEL TANKS
- INSULATED PANEL SLIDING DOORS
- RIDGE VENTILATOR WITH VERMIN PROOFING
- CONCRETE BASE WALL-PAINTED-COLOUR TBA

- CONCRETE WALL SCREEN TO GALV. STEEL STAIRS
- ALUMINIUM FRAMED WINDOWS/DOORS-TINTED GLAZING-POWDERCOAT-BLUE COLOUR
- CONCRETE WALL TYPE A (Pre-cast/Tilt up) GROOVES SMOOTH OFF-FORM FINISH
- PAINTED OFF-FORM (PAPERBACK COLOUR, CONCRETE WALL)
- PAINTED OFF-FORM (SURFMIST COLOUR, CONCRETE WALL)
- MASONRY BLOCK WALL TBA
- GALVANIZED STEEL COLUMNS AND BRACINGS
- GALVANIZED STEEL STAIRS/GALV. HANDRAILS

- CANTILEVERED METAL AWNING
- COLORBOND TRIMDEK 0.42 CLADDING-COLOUR "A" TBA
- COLORBOND TRIMDEK 0.42 CLADDING-COLOUR "B" TBA
- SUN CONTROL METAL AWNING,RED COLOUR
- STEEL ROLLER SHUTTERS WITH SELECTED COLORBOND FINISH
- COLORBOND METAL GUTTERS/DOWN PIPES,COLOUR TO MATCH WALL
- STEEL BOLLARDS,COLOUR YELLOW
- POLISHED MASONRY BLOCKWALL, PAPERBACK COLOUR, POLISHED FACE

- SOLID CORE DOORS,METAL CLAD PAINTED
- ALUMINIUM COMPOSITE METAL AWNING RED COLORBOND FINISH
- ALUMINIUM COMPOSITE METAL PANEL, METALLIC FINISH
- ALUMINIUM COMPOSITE METAL PANEL RED COLORBOND FINISH
- ALUMINIUM COMPOSITE METAL PANEL BRONZE COLORBOND FINISH



© This drawing and all information contained in it is the property of Plandes Group Pty Ltd, and this drawing must be returned to us on demand. This drawing is issued on the condition that except with our written consent, it must not be reproduced or communicated to any party and it must not be used for any other project or purpose than it is intended.



PLANDES GROUP
DESIGN & DOCUMENTATION
ACN: 076 055 680
297 EASTERN VALLEY WAY, MIDDLE COVE, NSW 2068
PHONE: (02) 9417-2835; FAX: (02) 9417-540
e-mail: jess.bon@plandesgroup.com.au

Drawn
BAPG

Checked
JB

Date
10 MAY 2017

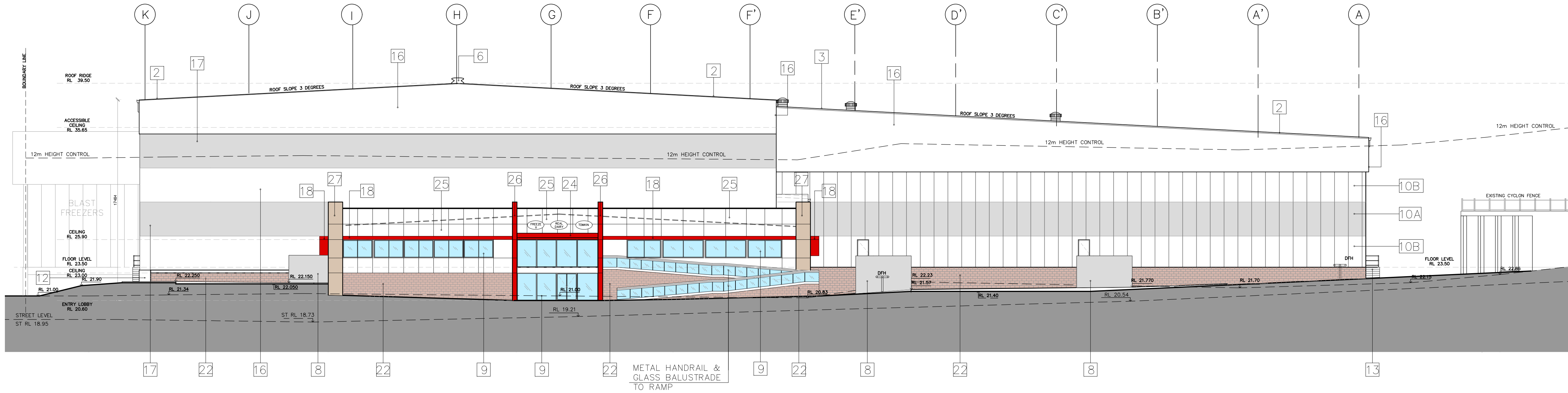
Scale
1:200@A1

Drawing title
**SOUTH&NORTH
ELEVATIONS**

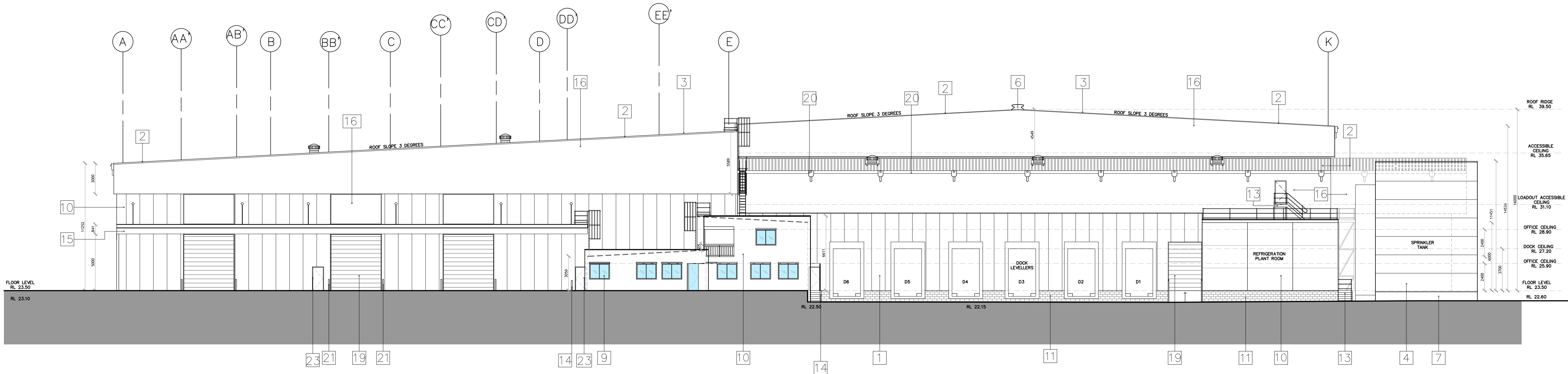
Project address/owner
Lederer Group
37-39 WENTWORTH ST, GREENACRE NSW 2190

Project/title
**LEDERER GROUP COLD STORAGE
& WAREHOUSE FACILITY**

H	10.05.17	DA SUBMISSION
Drawing no.	Revision no.	
DA06	H	



1
DA05
FRONT (EAST) ELEVATION
SCALE 1:200 @A1



2
DA05
REAR (WEST) ELEVATION
SCALE 1:200 @ A1

FINISHES SCHEDULE

- 1 COLORBOND "PIR" INSULATED WALL PANELS-SURFMIST COLOUR
2 ZINCALUME-LYSAGHT TRIMDEK 0.48 BMT DECK ROOF
3 COLORBOND FASCIA CAPPING-COLOUR TBA
4 GALVANIZED STEEL TANKS
5 INSULATED PANEL SLIDING DOORS
6 RIDGE VENTILATOR WITH VERMIN PROOFING
7 CONCRETE BASE WALL-PAINTED-COLOUR TBA

- 8 CONCRETE WALL SCREEN TO GALV. STEEL STAIRS
9 ALUMINIUM FRAMED WINDOWS/DOORS-TINTED GLAZING-POWDERCOAT-BLUE COLOUR
10 CONCRETE WALL TYPE A (Pre-cast/Tilt up) GROOVES SMOOTH OFF-FORM FINISH
10.A PAINTED OFF-FORM (PAPERBACK COLOUR, CONCRETE WALL)
10.B PAINTED OFF-FORM (SURFMIST COLOUR, CONCRETE WALL)
11 MASONRY BLOCK WALL TBA
12 GALVANIZED STEEL COLUMNS AND BRACINGS
13 GALVANIZED STEEL STAIRS/GALV. HANDRAILS
14 GALVANIZED STEEL GUARD RAILS

- 15 CANTILEVERED METAL AWNING
16 COLORBOND TRIMDEK 0.42 CLADDING-COLOUR "A" TBA
17 COLORBOND TRIMDEK 0.42 CLADDING-COLOUR "B" TBA
18 SUN CONTROL METAL AWNING,RED COLOUR
19 STEEL ROLLER SHUTTERS WITH SELECTED COLORBOND FINISH
20 COLORBOND METAL GUTTERS/DOWN PIPES,COLOUR TO MATCH WALL
21 STEEL BOLLARDS,COLOUR YELLOW
22 POLISHED MASONRY BLOCKWALL, PAPERBACK COLOUR, POLISHED FACE

- 23 SOLID CORE DOORS,METAL CLAD PAINTED
24 ALUMINIUM COMPOSITE METAL AWNING RED COLORBOND FINISH
25 ALUMINIUM COMPOSITE METAL PANEL, METALLIC FINISH
26 ALUMINIUM COMPOSITE METAL PANEL RED COLORBOND FINISH
27 ALUMINIUM COMPOSITE METAL PANEL BRONZE COLORBOND FINISH

